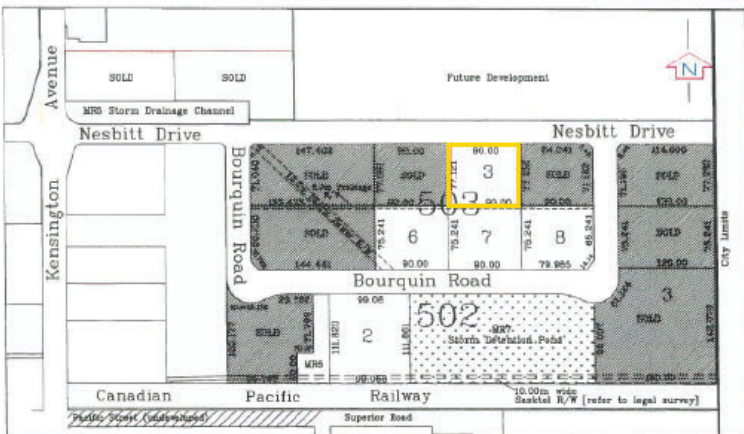


Glen Peterson Industrial Park



524 Nesbitt Drive



Property Description

The property is part of the Glen Peterson Industrial Park. The property is fully serviced, but is undeveloped. Nearby features include Southeast College and a shopping centre.

Area is currently under review and may change from an industrial to a mixed use business park. Contact Land Development Services for updates.

Legal Location

Lot 3 Block 503
Plan 101998851

Parcel Area

0.694 ha. (1.72 ac.)

Dimension

90.03m x 77.11m

Sale Price

Incentives available.
Contact
Economic Development
for detailed information.

Status

Serviced, but undeveloped

Zoning

Industrial, under review

Alley

n/a

Amenities

None



Land Development or Economic Development

306-634-1800

info@estevan.ca

www.estevan.ca

1102 Fourth Street, Estevan, Sk. S4A 0W7