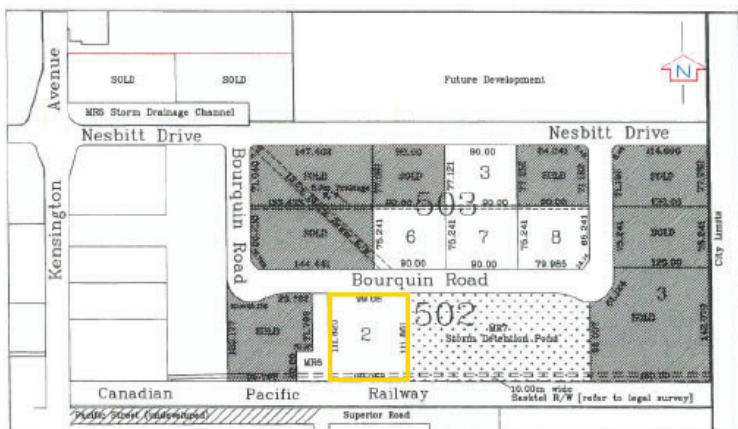


# Glen Peterson Industrial Park



**516 Bourquin Road**



## Property Description

The property is part of the Glen Peterson Industrial Park. The property is fully serviced, but is undeveloped. Nearby features include Southeast College and a shopping centre. Area is currently under review and may change from an industrial to a mixed use business park. Contact Land Development Services for updates.

## Legal Location

Lot 2 Block 502  
Plan 101998851

## Parcel Area

1.109 ha. (2.74 ac.)

## Dimension

99.1m x 111.91m

## Sale Price

Incentives available.  
Contact  
Economic Development  
for detailed information.

## Status

Serviced, but undeveloped

## Zoning

Industrial, under review

## Alley

n/a

## Amenities

None



## Land Development or Economic Development

306-634-1800

info@estevan.ca

www.estevan.ca

1102 Fourth Street, Estevan, Sk. S4A 0W7